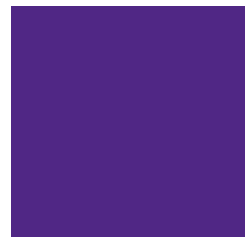
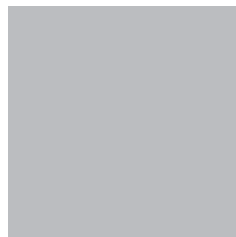
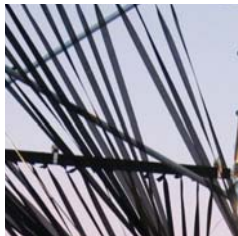
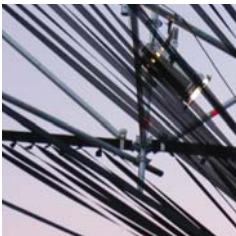


A Year in Review

2014/2015



Introduction from the Chair

Carl Pascoe

This review document will give you an insight into the work of the Foundation and the future focus of our activities.

Our 2014/15 focus has been on strengthening governance principles and developing and confirming a forward-looking strategy that positions the Foundation well for future activity.

The work completed in this space will also ensure long-term sustainability for the Foundation.

While this activity is essential from a governance perspective, it is the allocation of grants and funding that is our real purpose. Work in this area gives Trustees the satisfaction of knowing that Foundation time and dollars are well spent. As well as a focus on positioning and strengthening the Foundation, we also supported an exciting range of activities over the past 18 months. These CPIT Foundation supported activities help students and staff make the most of valuable opportunities that in many cases could prove life changing.

Our grants must align with the Foundation goals and objectives which are:

- To promote and support the general educational purposes and activities of CPIT.
- To improve the educational facilities of CPIT.
- To provide financial assistance (including the provision of scholarships and bursaries) to students of CPIT on such conditions (if any) as they deem appropriate.
- To support student educational activities of CPIT.
- To support staff education and development projects of CPIT.
- To support innovative educational projects undertaken by staff of CPIT.
- To support any other educational or charitable enterprise.

Over the past 18 months we have allocated over \$50,000 in grants and support for activities such as the 2014 national Adult Learners' Week launch.

This year the CPIT Foundation made the decision to produce an annual report that focused on our financial performance¹ and to produce a separate document with a focus on our grants and activities allocated and undertaken over the past 18 months.

I hope that you enjoy reading more about the work of the CPIT Foundation and the impact that this has on students and staff from CPIT.

1. The Annual Financial Report for the 2014 Financial year is available on the CPIT Foundation website www.cpfoundation.co.nz

Karen Lewis Awards

For the past two years a highlight for Trustees has been the awarding of the Karen Lewis Awards. Karen was a long serving trustee of the Foundation and she passed away in September 2013.

Karen had a passion for the hospitality sector and she wanted to recognise students with the same passion and zest. We think that the students chosen as recipients in 2014 fit the bill well. A total of \$9,500 was distributed among six students from The Food and Hospitality School at CPIT.

Logan Kampjes will use his \$2,000 grant to undertake international work experience. Logan will travel to Amsterdam to gain experience working in the hospitality sector. With family connections in the city, it was a natural choice for him and enabled him to gain valuable experience while still having some support from family.

Lucy Kay impressed the Trustees with her hard work and commitment to furthering her career. Lucy had just been appointed Training and Development Manager with restaurant Spice Paragon and while she had valuable hospitality expertise, she wanted to increase her training in human resources management to help her undertake the new role effectively. Our grant assisted with the costs of course attendance.

Mikenzi Kemp is committed to a career in hospitality and had completed training at CPIT but wanted to undertake training that offered a whole new perspective. The Foundation contributed towards the cost of completing a barista course and New Zealand School of Wine and Spirits training.

Every new chef needs great knives to do their job well. With an apprenticeship on offer at renowned Christchurch restaurant Chillingworth Road, **Jesse Youngson** needed the tools of the trade. The Foundation grant enabled him to purchase knives, a sharpening stone and a case that will hopefully be in his tool kit for many years to come.



Mikenzi Kemp and Lucy Kay

Jacqui Gada was in the same boat as Jesse; she had a new job at V Base and just needed the knives to complete the picture. We were delighted to assist with the purchase.

Perhaps one of the more satisfying stories was from **Ofa Schuster**. Ofa was an adult student who came to a career as a chef later in life and she embraced the new challenge with passion. The Foundation provided a grant to enable Ofa to purchase a KitchenAid mixer to enable her to continue with bakery training. (See cover photograph.)

On the Job Training

CPIT Hospitality Tutor **Debby Taylor** was offered the opportunity to gain work experience in a Dubai Hotel during the first semester break in 2014.

With tutors at CPIT needing to keep track and pace with reality, Debby wanted to use the break to take time out from teaching and tutoring, and gain valuable first-hand experience in one of the world's most modern hotels. She needed to know more about the rapidly changing world her students will be working in.



Debby's area of expertise is in Rooms Division and she has been teaching students at CPIT for the past twenty years. The Rooms Division of a hotel includes Housekeeping, Front Desk Check In and Check Out, Reservations, Night Audit, Telephone, Portering and Concierge. The three week work experience project

added valuable expertise and knowledge to Debby's existing skill base. The Foundation was pleased to be able to support Debbie with a \$3,500 grant to facilitate this opportunity.



Photographs courtesy of Orion

EVolocity

EVolocity is designed to stimulate innovation in electric vehicles and smart transport, develop skills in electric vehicle design and technology and attract students to undertake courses and careers in core STEM (science, technology, engineering and maths) areas.

The event offers a project based learning programme for young people to develop skills in this area by designing and building an electric vehicle. Fifteen Canterbury schools developed custom made vehicles to race in the inaugural EVolocity event held at Mike Pero Motorsport Park, Ruapuna during 2014.

CPIT tutors facilitated boot camps for the budding designers to provide mentoring advice and guidance to help get projects off the ground and to showcase skills in this area.

The Foundation contributed \$10,000 to CPIT Engineering and Architectural studies school to assist with the provision of required support.

EVolocity race day was a brisk spring day in November. Students did themselves proud with a great range of battery operated vehicles on show and in competition with each other in a range of categories including best design and vehicle that travelled furthest on one battery charge. Over 5,000 people attended the event and the Foundation has agreed to continue support for the project in 2015. We look forward to seeing another great line up of vehicles and budding engineers!



Synthesis, the CPIT student entry in FESTA event CityUps. Photograph by Donna Robertson.

FESTA

Christchurch has had a tough few years following the earthquakes and residents and visitors look forward to celebrations.

The Foundation provided a grant to CPIT Architectural students to participate in the 2014 Festival of Transitional Architecture's headline event CityUps.

CityUps transformed two blocks of central Christchurch with a spectacular city of the future designed and created by the next generation of architects and designers. CityUps was live for one night only and it helped to make Christchurch feel like a city again. More than 10,000 people came into the centre to participate in the event.

The students' futuristic city comprised thirteen designs made with a variety of materials. The financial support provided by the Foundation enabled CPIT students to participate in the event and gain valuable design and construction experience. This is the second year we have supported CPIT student involvement in FESTA.

Adult Learners' Week

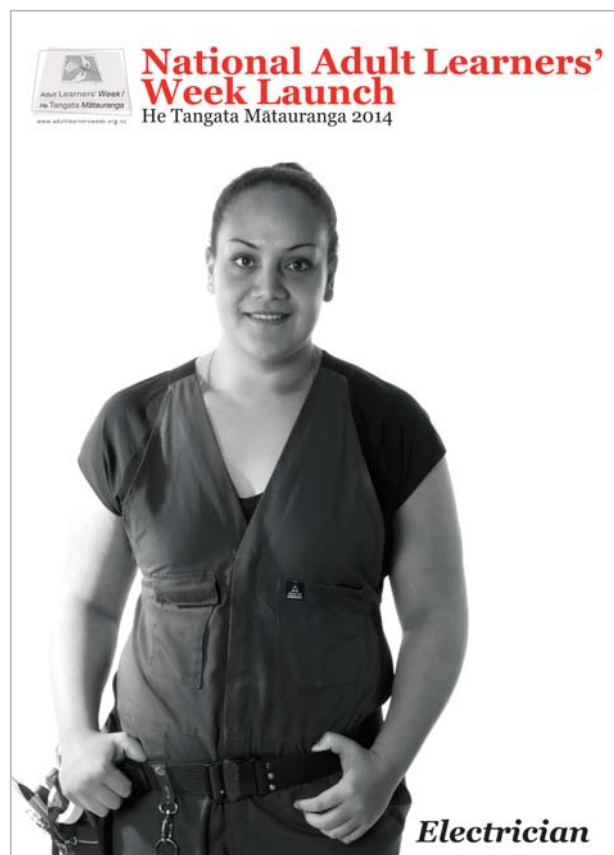
A key goal for the Foundation has been to develop relationships with the philanthropic sector and the wider business community. It was with this in mind that we agreed to support and underwrite the national launch of Adult Learners' Week - He Tangata Mātauranga held in Christchurch in 2014.

Minister of Women's Affairs, Hon Jo Goodhew, launched the event alongside several young women that have taken advantage of the opportunity to pursue adult learning and open up new career paths or change careers.

During 2014, 13.5% of all students enrolled at CPIT in the trades sector were women with the majority enrolled in painting and decorating and engineering and electrical studies. The four women featured in the launch had all undertaken trades training through CPIT or BCITO and agreed to share their stories.

One of those women was Joy Lalahi, who trained through CPIT's Pasifika Trades Training scheme and was the inaugural winner of the Top Female Trades Award in 2013.

In addition to hosting the opening event, where possible the Foundation used students to help make the launch a success. Student designer Stefan Downs was employed by the Foundation to design and produce the invitation and other promotional material for the opening night event. This included undertaking photography work using the four female CPIT trades students as models. Stefan also played the role of official photographer at the event. The toe tapping entertainment on the night was provided by a student jazz band.



Adult Learners' Week posters, design and photography by CPIT student Stefan Downs

Plains FM

A key theme for the Foundation is facilitating and enabling experiences for students and staff from a variety of fields. In 2013 we agreed to provide a grant for an intern at Plains FM and this was uplifted during the 2014 year.

CPIT New Zealand Broadcasting School student Jamie Lawson. Photo courtesy of Nicki Reece.



CPIT New Zealand Broadcasting School student Jamie Lawson undertook a 25 week (six month) internship with Plains FM as a Production Assistant in the final six months of his degree course.

Jamie's role involved recording and editing programmes, assisting community broadcasters with ideas, maintaining and scheduling station logs, loading programmes into the schedule, creative writing, uploading podcasts, and being a regular contributor on Plains FM's Lite L8 Breakfast Show.

Jamie is now working in the commercial radio sector for Radio Wanaka and its alternative low-powered FM frequency Roy FM in Wanaka, Otago.

Plains FM is Canterbury's only community access radio station, providing training and facilities to groups and individuals who want to make radio programmes. The station broadcasts over 70 regularly scheduled programmes in 13 different languages from studios located on the CPIT campus.

Our grant provided financial assistance for a CPIT broadcasting student to gain valuable work experience, which has led to a paid position in the commercial sector.

Colin Russell

At the AGM of the Foundation in June 2014, Trustees farewelled Colin Russell from his role of Patron of the Foundation.

Colin was the original Settlor of the Foundation and has had a fifty year association with CPIT. His commitment to adult education and CPIT has been remarkable and past and present students, staff and Foundation Trustees owe him a debt of gratitude for his contribution.

Canterbury Earthquake Recovery Funders Forum

In-line with our strategy for developing relationships with the philanthropic sector, the Foundation has taken an active role in supporting the Canterbury Earthquake Recovery Funders Forum.

This is a group of philanthropic entities from across Christchurch that meet on a regular basis to discuss the challenges of working in a post disaster environment and to identify and facilitate solutions. The Foundation has provided the venue and hospitality to help make the meetings a success and we've been an active participant in discussions that seek solutions to the unique challenges faced in Christchurch.

Strategy Development

While grant allocations for 2014 did not reach the levels of previous years, the work that Trustees have undertaken during 2014/15 to develop and implement sound strategy and governance will ensure the Foundation remains relevant and effective.

Work undertaken by Trustees has included the development of a formal Statement of Investment Priorities and Objectives (SIPO), creating the platform to enable us to grow our investments and therefore our grants. Trustees have worked closely with EQ Wealth on the strategy to ensure we have the best possible advice and guidance with this important piece of work.

We also reviewed and strengthened our governance manual so that expectations and requirements of Trustees are clear and well documented.

More recently Trustees have spent a significant amount of time developing a strategic path forward for allocation of grants. Trustees want to make sure that we are adding real value to CPIT and those funds are being used effectively to grow the skills and experience of staff and students. We also want to ensure that our work is informed by and reflects the key principals included in the SIPO. As a result, the Foundation has formed three strategic work streams to investigate and develop future funding allocations.

B Block

Finally, four years after the earthquake we have been able to make informed decisions about the future of our property investments.

B Block on Madras Street was badly damaged in the earthquakes and was below the new post-earthquake New Zealand Building Code. As a result it required a significant amount of strengthening work to be undertaken or alternatively it needed demolishing with decisions made about land use. Trustees were concerned that we were owners of a building that was looking more and more dilapidated as weeks went by. In early 2015 we decided to demolish the building and bank the land until there was more certainty around future use. The demolition is expected to take place in mid-2015 and Trustees are still determining future use for the land.

These are:

- Staff Development
- Student Support and
- Business Outreach and Engagement.

Trustees have worked closely with staff at CPIT as well as with Canterbury Development Corporation to complete due diligence on each of the streams of work. We look forward to finalising and implementing the outcomes of these investigations during 2015.

Summary

There's no doubt that 2014/15 has been another year of challenges. We are making progress with our goals of ensuring long term sustainability but there is still work to do. We believe that the current work being undertaken around the grant allocation strategy will provide strong foundations and a solid platform for future activity.

Trustees

The Trustees of the CPIT Foundation give up a significant amount of time to carry out their roles in enhancing the work of the Foundation. We would like to take this opportunity to thank each trustee for the amount of time and energy they have dedicated to the CPIT Foundation. Each trustee brings a fresh perspective and set of skills to the table. The CPIT Foundation is pleased to acknowledge its eleven trustees.

Carl Pascoe - Chair

Carl has over 30 years' experience in educational, community, directorships, business management and consultancy roles within a wide range of organisations at both local and national levels. Carl has run his own consultancy business for 24 years. His consultancy specialises in assisting people to shape and develop values based, challenging, profitable, exciting and fun organisations. He is committed to ensuring young people have real opportunities for education and work.

Elizabeth Hopkins

Elizabeth has over 30 years' experience in commercialising science and has worked in several areas including pharmaceuticals, nutraceuticals, medical devices, cosmetics, and food. Elizabeth is Director of Research and Innovation at Lincoln University. She has been CEO of several New Zealand Biotech companies and now holds directorship and consultancy roles within a range of organisations, at both local and national levels. Elizabeth is also Deputy Chair of the CPIT Council.

Kay Giles

Kay has been Chief Executive of CPIT since August 2010. Prior to this, Kay spent 25 years in senior management roles in the tertiary education sector in Australia, most recently as Director at SkillsTech Australia, the trades and technician institute in the Brisbane metropolitan area. She has a passion for vocational education and training and the role it plays in contributing to economic, industry community and individual development. Kay is on a number of local and national tertiary education related committees and involved in several working groups associated with the Christchurch rebuild.

Jackie Curtis

Jackie is managing partner of Cherry Red Consulting, a Christchurch based communications consultancy. Prior to establishing Cherry Red, Jackie held senior roles within the corporate sector. Jackie has a comprehensive background and significant experience in the provision of strategic communications and marketing in both the private and public sector. Jackie is a graduate of Victoria University, a Fellow of PRINZ and has completed the week long residential NZIOD course.

Jane Cartwright

Jane was appointed to CPIT Council in 2011 and sits on the Foundation as an ex officio Trustee. Jane has held executive and senior roles in the health system and local government, leading developments in community, mental and public health. She is a registered dietitian and has substantial governance and operational experience.

Jane now works in local government in a leadership role, chairs the Boards of Brackenridge Estate and the NZ institute of Community Healthcare and is a member of the Nurse Maude Association Board. She is a member of Health Practitioners Disciplinary Tribunal and NZ Institute of Directors and Associate Fellow of the NZ Institute of Management.

Scott Whitaker

Christchurch born and bred, Scott is a partner with Duncan Cotterill, a large Christchurch law firm. Scott practices predominantly in corporate and commercial law and property law and has particular specialty in finance and banking, insolvency and agricultural related activities. He has acted for a number of finance companies and for major New Zealand banks as well as a wide range of companies, property investors, insolvency practitioners and farmers.

Fiona McKissock

Fiona moved to Christchurch in 2013 and is General Manager of Crighton Anderson, a national specialised valuation firm. She brings a broad range of commercial and financial experience to her role as Trustee and Deputy Chair of the Foundation. Her management and financial career has spanned roles ranging from accounting through to general management, consulting, and project management. Fiona has broad experience in a wide range of industries across New Zealand, Australia and the United Kingdom, including the community not for profit sector. She enjoys her involvement with the Foundation and the opportunity to contribute to our students educational experiences and to support CPIT and the wider region.

Geoff Cranko

Geoff has been managing and growing companies on a global basis for 30 years. A strong advocate of long term strategy, clear communication and effective marketing, he believes strongly in developing young people through exposure to real world experiences. Geoff is the Group Managing Partner of Strategy Design and Advertising, a boutique international network of agencies. As well he is a director of several national businesses, Chair of the World Busker's Festival and a Trustee of the Canterbury Medical Research Foundation.

Kay Poulson

Kay is Founder and Managing Director of Help4U, a patient advocacy and health navigation organisation that specialises in community healthcare software development. Prior to establishing Help4U, she spent more than 20 years' working with public, private and not for profit organisations in senior management and consultancy roles. Kay has an MBA with distinction from the University of Canterbury, a Diploma of Secondary Teaching from the Christchurch College of Education and is a registered PRINCE2 Practitioner.

Jenn Bestwick

Jenn was appointed CPIT Council Chair by the Minister of Tertiary Education in 2010. Jenn's professional career has been largely in strategy and business development working in both the public and private sectors. In addition to her role with CPIT, Jenn is on the Boards of Tourism New Zealand and Southern Response Earthquake Services. As Chair of the Council, Jenn is an ex officio Trustee of the CPIT Foundation.

Katherine Ewer

Katherine Ewer, LLB, TEP is an experienced tax and trust legal practitioner based in Christchurch. Katherine became a Trustee of the CPIT Foundation in November 2013.

Katherine has over 18 years' experience as a solicitor in New Zealand and operates her own specialist tax and trust practice. Katherine advises on income tax and GST issues in respect of a wide variety of commercial, corporate, property and cross border transactions as well as providing tax and structuring advice to commercial and property clients. Katherine also advises on tax, asset and estate planning opportunities for individuals (both resident and non-resident).

Katherine is a member of the Society of Trust and Estate Practitioners (STEP).



CPIT Foundation
PO Box 22-631, Christchurch
Phone: 021 810 590
Email: cpfoundation@xtra.co.nz