



Annual Report 2013

Chairperson's report

Carl Pascoe

It has been an exciting year for the CPIT Foundation, with a great deal of work undertaken and accomplished by trustees.

The most significant piece of work has been the management of the Foundation's shift in purpose from being solely a provider of grants to a role as a facilitator. The result of this will be the provision of Christchurch wide support to projects that draw together like-minded institutions and organisations to coordinate delivery of philanthropic programmes.

To launch this shift in direction, in 2012 the CPIT Foundation funded and managed The Big Idea campaign. The Big Idea campaign asked young people to tell us what they needed to help transform the South East corner of the city into a vibrant and youthful destination (see page 3 for more information). It was a huge success, with more than 600 ideas being presented to trustees.

Though the number of ideas generated was a great accomplishment for trustees, the biggest achievement was the hosting of more than 100 key decision makers at a Foundation function which was designed to give those ideas centre stage and give young people the audience they deserve.

I want to take this opportunity to thank all those who have supported The Big Idea, whether by attending the function

or by their on-going efforts in exploring potential collaboration and investment options in order to make some of these ideas a reality.

Last year, in addition to The Big Idea campaign, the CPIT Foundation's logo received a facelift to better mirror the Foundation's new focus. While we only undertook minor tweaks, the outcome is a logo that more readily reflects the future positioning of the organisation.

During 2013 this rebranding will be continued – starting with a new and improved website designed to make the grant application process easier, to better celebrate the work of successful applicants and to increase the profile of the Foundation as a facilitator.

Another result of the Foundation's change of direction is that operating expenses for the 2012 financial year decreased significantly. This is largely due to a reduction in the number of grants compared to previous years. The CPIT Foundation total assets are now more than \$5.6 million while the growth in equity over the past financial year was just over \$100,000.

The new focus for the Foundation is an exciting step and trustees are looking forward to working towards our new shared vision with partners in the community.

In 2012 we said farewell to two long standing members of the CPIT Foundation – Tony Kunowski and Barry Pett.

Tony Kunowski was Executive Director of the Foundation for many years. During that time he provided professional guidance and support to assist with the smooth running of our operations. We wish Tony well for the future.

Our long standing trustee and previous Chair, Barry Pett also left the Foundation. Barry has been generous in giving freely of his time and energy to the Foundation for many years. He has provided strong leadership and helped ensure the Foundation not only met but exceeded its targets. Barry led the Foundation superbly in the immediate aftermath of the earthquakes and on behalf of my fellow trustees I thank him for his generous contribution of time.

Finally I wish to thank my fellow trustees for their hard work and support over the past twelve months. Last year was a particularly hard year as the CPIT Foundation had significant demands placed on it as we shifted our thinking and scope and embarked on several ambitious projects. Those of us living in Christchurch continue to face daily challenges so I appreciate the giving of their time voluntarily to participate as a trustee.

Carl Pascoe

Chairperson
CPIT Foundation

The Big Idea

The Big Idea competition was the CPIT Foundation's principal project for 2012. It symbolised a change of direction for the organisation as it identified a need to shift away from purely a grant-based provider to the key role of facilitator.

The Big Idea was also the CPIT Foundation's way of demonstrating the need for decision makers to be involved with and understand what young people want for their new city, particularly as the rebuild starts to gain some momentum.

The Big Idea competition was divided into two parts.

The first part was to run a competition for marketing and business students studying at CPIT. The Foundation wanted to involve students in the creative process – the idea being that young people know how to reach out to young people – and so requested students design an imaginative marketing plan that would appeal to a younger audience and attract entries.

The second part was to then use the winning marketing plan and support the winning students to run a city-wide competition asking for under 25 year olds to submit an idea that would have the potential to transform Christchurch city into a vibrant and youthful place.

Both the winning CPIT students and the winning young person behind The Big Idea would win \$5000.

The winning marketing plan was created by CPIT students James Kelly, Katrina Roxburgh and Kirstie Jones. Their creative marketing plan opted to utilise social media, a media stunt, visits to malls and schools and a website, to generate ideas to the competition.

Their marketing strategy was a success and more than 600 ideas were entered from youth of all ages from around the city.

Three finalists were selected from those 600 ideas. Judges included the CPIT Foundation trustees, students and members of the Christchurch Youth Council.

The finalists were then asked to present their ideas at a cocktail function in front of key Christchurch decision makers.

The three finalists were Harry Loughnan, 17, Judy Yun, 12 and 15-year old Grace Lethbridge.

Judy Yun entered the idea of a creative area where young artists could display their art work; perform on a free stage and where food from international cultures would be sold as part of a youth market.

Grace Lethbridge wanted Canterbury artists to design several large art sculptures with solar panels worked into the design to power parts of the city and offer free Wi-Fi.

Harry Loughnan suggested a purpose-built international arena for robotics competitions to be held.

After much deliberation, the winner was announced. The winner was Harry Loughnan whose unique idea of a robotics arena where young people could compete and get involved in the international world of robot design, building and competing, engaged and sparked the judges interest.

Judges were also intrigued to learn that robotics is the fastest growing sport in the world, with more than 4800 Vex Robotics teams globally. In fact, the Vex Robotic World Championship, which is historically held in the

United States, attracts more than 10,000 intermediate, high school and university students and teachers from more than 20 countries.

Amazingly, this year, a group of Kiwi teams dominated the 2013 Vex Robotic world champs for the fifth year running. The New Zealand team was crowned world champions in sack attack, the 2013 game concept and finished first and second in the robot skills competition.

Trustees of the CPIT Foundation are now working hard to make Harry's idea happen. Trustees are making connections and looking for collaborations and are hopeful they will get to launch a robotics arena in the city, in some form or another, in the future.

“The Foundation wanted to involve students in the creative process – the idea being that young people know how to reach out to young people”



Above: The Big Idea campaign.
Bottom left: From left to right
finalists Judy Yun, Harry Loughnan
and Grace Lethbridge.



Ellerslie Flower Show

For the third year running, the CPIT Foundation supported architecture students of CPIT to enter the prestigious 2013 Ellerslie International Flower Show.

Held in Christchurch's Hagley Park, the Ellerslie International Flower Show is New Zealand's premier garden event, attracting thousands of local and overseas visitors each year.

This year, two groups of four talented CPIT students entered the awards with guidance from CPIT architecture lecturer Megan Lutton.

The two groups entered Ellerslie's Emerging Designs category. The category, which is for tertiary students only, called for entrants to create a roof top garden for a young, 20 something, single, professional, living in the heart of Christchurch's central city.

The students were hugely successful, winning gold and silver for their roof top garden designs.

CPIT students Sam Paterson, Blake McCutcheon, Sarah Rigden and John-Paul McGlion were awarded gold for their modern and low maintenance design titled 'Framed'.

Meanwhile 'One Tree Roof', which took out the silver award, was designed by students Darryl Jacobson, Innes Johnstone, Shannon Neilson and Gertrude Gloria. Their roof top garden design utilised recycled materials and potted succulents in juxtapose with natives and featured four different decks made from reclaimed weatherboards from the red zone.

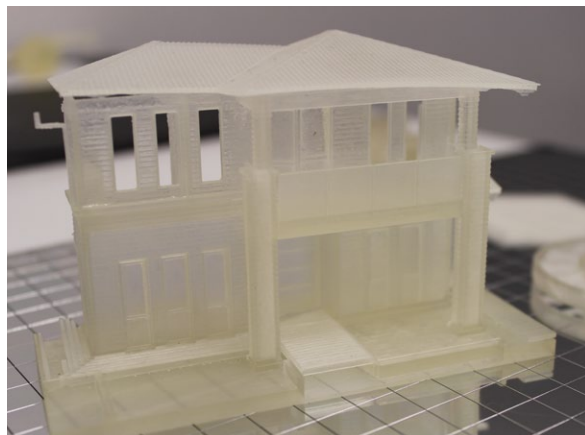
Entry to Ellerslie was made possible by an \$8000 grant from the CPIT Foundation. The grant was used to help turn the student's designs into a reality by purchasing the plants and materials.

The CPIT Foundation is proud to support the work of students in design and architecture.

Top: Winning gold entry titled 'Framed'.
Bottom: Silver winning entry titled 'One Tree Roof'.

Past Grant Recipients

We are taking the opportunity in this year's annual report to provide an update on some of the projects that the CPIT Foundation has supported over the past few years. The grant recipients inspire and enthuse us with their applications and as trustees we were keen



A model produced by the CPIT's 3D printer.

to have an update on progress made since awarding the grants. This is our opportunity to share that progress with you. Over the next few pages you can find out more about what's happening with ArtBox, the 3D printer and the production of Pacific Post.

3D Printer

In 2011, the CPIT Foundation granted CPIT \$80,000 to acquire a 3D printer.

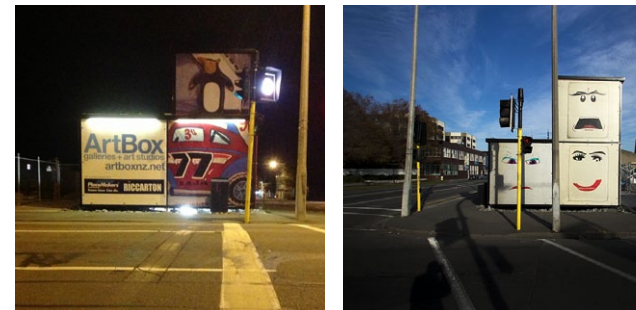
The printer was part of the institute's knowledge transfer strategy to improve teaching and research by building capability and capacity in rapid prototyping. In addition, CPIT anticipated the 3D printer would add value to local industry through technology capacity building and collaborative research projects.

Launched in November 2012, this sophisticated technology converts 3D digital computer designs into solid models. The strength of the materials used to produce the model enables students to test their prototypes for functionality, as well as for proof of concept and aesthetics.

Cross functional, the 3D printer is used to educate CPIT students studying engineering, art and design, architecture and business. Also available for industry use, CPIT's 3D printer is helping local businesses change the way they generate prototypes and present designs to clients – saving time and money.

"The staff-industry collaboration aspect is important to us," says Margaret Leonard, CPIT Manager of Research & Knowledge Transfer. "Having a sophisticated piece of technology that small, individual, local firms couldn't afford, but can collectively access, will create a lot of exciting new opportunities."

Looking to the future, having the 3D printer as part of the curriculum, arms CPIT's engineering, architectural studies and art & design students with working knowledge of an innovative technology that is now used globally throughout tertiary education and in industry.



ArtBox

The CPIT Foundation is proud to be one of the major sponsors of ArtBox, contributing \$50,000 in 2011 to the project.

Mobile, modular and steel-framed, the ArtBox, located on the corner of Madras and St Asaph streets, is a new creative space for Christchurch artists to exhibit and for residents to browse, view and purchase art.

Much anticipated by the CBD and art community, the first gallery space of the ArtBox officially opened on 27 February 2013.

To date, more than 1500 people have attended the gallery's four exhibitions and more than double that have viewed the exterior sculptures on display. Another six exhibitions are to be held throughout the year.

The ArtBox was developed in partnership with local company F3 Design but is the brainchild of CPIT's Martin Trusttum.

Each Artbox is a portable 2.9 metre cube that can be joined with other modules in various arrangements. Once completed, the ArtBox will comprise of 18 individual ArtBox modules configured as four separate buildings.

The second gallery space, the Lantern Gallery, will open on Wednesday 31 July, and the associated BeatBox, a rehearsal space for musicians, is due to launch in September of this year.

The ArtBox has received much support from the local community, and the CPIT Foundation is just one organisation which can see the value of art flourishing in the central city.



Top: Stephanie McKellar-Smith and Ross McKellar pose for Pacific Post.
Bottom: actors at the Court Theater perform Pacific Post.

Pacific Post

A CPIT Foundation grant of \$11,200 in 2010 assisted creative couple Stephanie McKellar-Smith and Ross McKellar to bring their families' story to the great stage of the Court Theatre.

Pacific Post, a new New Zealand play, was inspired by a letter from Stephanie's grandfather Bud, to his wife Hazel, while he was stationed in Fiji during World War Two.

"My mother found the letter in the back of a cupboard after my granddad passed away. It was really amazing, particularly because none of the rest of the family had seen it before," says Stephanie. "The instant Ross and I saw the letter we knew this story would make a wonderful play."

The husband and wife team, Ross is an actor and Stephanie a director, decided to write the play together while completing their Masters of Arts through Charles Sturt University.

"In order to focus on my Masters, with three children, my work at CPIT and my role as a director, I needed a project that inspired me and that I was passionate about. Pacific Post was the perfect fit," says Stephanie.

Once scripted, the CPIT Foundation grant was used to fund the production of the play in 2010, performed at NASDA. The funding enabled Stephanie and Ross to employ professional actors to bring the play to life.

The savvy couple used the opportunity to market the play and invite key industry players to the production.

"One of the guests we invited was the CEO of the Court Theatre, they asked us to test the production as part of Fresh Ink, from the success of this reading it was then selected to be added to the Court Theatre programme. Pacific Post was one of the first new New Zealand plays to be performed as part of the new season at the newly opened Court Theatre. It was a great honour," says Stephanie.

Pacific Post achieved above box office projections and received a substantial outside sponsor for the Court Theatre.

The talented duo is now looking to tour their play through the West Coast. "My home is the West Coast, and this is where my grandmother was living when she received the letters from my grandfather. It has a lot of significance for the play."

Rakatahi Supreme Awards

Full list of Rakatahi Supreme Award recipients

Supreme winners

Year 13:
Connor Matthews
Christchurch Boys' High School

Year 11-12:
Hayley Lee
Burnside High School

Year 9-10:
Laken Wairau
Christchurch Girls' High School

Year 7-8:
Sapphire Wairau
Te Whānau Tahī

Finalists

Jordyn Te Rahui-Hobbs
Geraldine High School

Ngamata Te Whakahawea Christie
Burnside High School

Jono Smythe
Burnside High School

Tirangi Hine-i-te-Awatea Skerrett
Villa Maria College

Aidan Marshall
Kaikoura High School

Josephine Nicholas-McAnergney
Christchurch Girls' High School

Isabella Costigan
Opawa Primary

In 2012 the CPIT Foundation was once again a sponsor of the CPIT annual Rakatahi Supreme Awards. The winners were announced at an awards evening held at the CPIT in late November 2012.

Eleven Māori intermediate and secondary students from Canterbury received recognition for their leadership, excellence in Te Reo Māori, commitment to tikanga, academic excellence and sporting performance.

Connor Taurapa Matthews of Christchurch Boy's High School received the prestigious Rakatahi Supreme Award for Year 13 for his pursuit of musical excellence and his passion for Te Reo Māori. The achievements which led to his nomination include taking out Top Musician at the CPIT Jazz Quest and completing the equivalent of two years of study towards a Bachelor of Arts at the University of Canterbury while still at secondary school. Connor intended to further his music studies by commencing a Bachelor of Musical Arts at CPIT Jazz School in 2013.

The Foundation has been a significant supporter of the awards since their inception in 2006. We recognise the value in ensuring young people have ongoing support to make their dreams a reality and to strive for excellence in their endeavours.

The awards have been run by CPIT through Te Puna Wānaka and the Centre for Māori and Pasifika Achievement (CMPA) since 2006.

Trustees

The Trustees of the CPIT Foundation give up a significant amount of time to carry out their roles in enhancing the work of the Foundation. We would like to take this opportunity to thank each trustee for the amount of time and energy they have dedicated to the CPIT Foundation. Each trustee brings a fresh perspective and set of skills to the table. The CPIT Foundation is pleased to introduce its ten trustees.

Carl Pascoe - Chair

Carl has over 30 years' experience in educational, community, directorships, business management and consultancy roles within a wide range of organisations at both local and national levels. Carl has run his own consultancy business for 21 years. His consultancy specialises in assisting people to shape and develop values based, challenging, profitable, exciting and fun organisations. He is committed to ensuring young people have real opportunities for education and work.

Elizabeth Hopkins

Elizabeth has over 20 years' experience in commercialising science and has worked in several areas including pharmaceuticals, nutraceuticals, medical devices, cosmetics and food. She has been CEO of several New Zealand Biotech companies and now holds directorship and consultancy roles within a range of organisations, at both local and national levels. She is also Deputy Chair of the CPIT Council.

Kay Giles

Kay has been Chief Executive of CPIT since August 2010. Prior to this, Kay spent 25 years in senior management roles in the tertiary education sector in Australia, most recently as Director at SkillsTech Australia, the trades and technician institute in the Brisbane metropolitan area. She has a passion for vocational education and training and the role it plays in contributing to economic, industry community and individual development. Kay is on a number of local and national tertiary education related committees and involved in several working groups associated with the Christchurch rebuild.

Jackie Curtis

Jackie is Managing Partner with Cherry Red Consulting, a Christchurch based communications consultancy. Prior to establishing Cherry Red, Jackie held senior roles within the corporate sector. Jackie has a comprehensive background and significant experience in the provision of strategic communications and marketing advice in both the private and public sector. Jackie is a graduate of Victoria University, a Fellow of PRINZ and has completed the week long residential NZIOD course.

Kay Poulson

Kay is Founder and Managing Director of Help4U, a patient advocacy and health navigation organisation that specialises in community healthcare software development. Prior to establishing Help4U, she spent more than 20 years working with public, private and not for profit organisations in senior management and consultancy roles. Kay has an MBA with distinction from the University of Canterbury, a Diploma of Secondary Teaching from the Christchurch College of Education and is a registered PRINCE2 Practitioner. Kay is a member of the New Zealand Health IT Cluster and a Director of the Rotary Club of Christchurch.

Karen Lewis

Karen has 20 years' experience in tertiary education and in the hospitality and tourism sectors. She currently volunteers for a number of organisations, ranging from a small, local community garden to serving on the national board of Youth Hostels Association of NZ.

Jenn Bestwick

Jenn was appointed CPIT Council Chair by the Minister of Tertiary Education in 2010. Jenn's professional career has been largely in strategy and business development working in both the public and private sectors. Jenn is on the Boards of Tourism New Zealand, Southern Response Earthquake Services and is Chair of Learning Media Limited. As Chair of the Council, Jenn is ex officio trustee of the CPIT Foundation.

Geoff Cranko

Geoff has been managing and growing companies for 30 years on a global basis. A strong advocate of long term strategy, clear communication and effective marketing, he believes strongly in developing young people through exposure to real world experiences. Geoff is the Group Managing Partner of Strategy Design and Advertising, as well as a director of several national businesses, Chair of the World Busker's Festival and a trustee of the Canterbury Medical Research Foundation.

Jane Cartwright

Jane Cartwright was appointed to the CPIT Council in 2011 and sits on the CPIT Foundation as an ex officio trustee. Jane has held executive and senior roles in the health system and local government leading developments in community, mental and public health. She is a registered dietitian and has substantial governance and operational experience.

Currently Jane is the Community Development Director for Pegasus Health (Charitable) Ltd, Chairs the Board of Brackenridge Estate and is a board member of the Nurse Maude Association and Institute of Community Health care. Jane is a Member of Health Practitioners Disciplinary Tribunal, member of the NZ Institute of Directors and Associate Fellow of the NZ Institute of Management.

Scott Whitaker

Christchurch born and bred, Scott is a lawyer with Duncan Cotterill, a longstanding Christchurch firm. Scott practices predominantly in corporate and commercial law and property law and has a particular specialty in finance and banking. He has acted for a number of finance companies and for major New Zealand banks as well as a wide range of companies and property investors.

Christchurch Polytechnic Foundation

Financial Summary

Summary Statement of Financial Performance

For Year Ending 31 December	2012	2011
Income	\$	\$
Income from investments	122,309	130,177
Income from rents	178,788	155,871
Other income	71,438	0
Realised capital (loss)/gain	28,741	-101,480
Gross income	401,276	184,568
Operating Expenses		
Grants & award function cost	25,715	353,660
Wages	40,000	40,000
Project	48,520	0
Sponsorship	3,730	0
Repairs and maintenance	71,438	0
Administration and financial expenses	46,258	53,576
Total expenses	235,661	447,236
Operating surplus/(deficit)	165,615	-262,668
Net +/- in Investment portfolio	276,851	-11,708
Net operating surplus/(deficit)	442,466	-274,376

Summary Statement of Financial Performance

Trust equity	5,459,897	5,342,431
Current liabilities	164,640	204,515
Non-current liabilities	8,946	3,000
Total funds employed	5,633,483	5,549,946
Non-current assets	4,181,991	4,146,870
Current assets	1,451,492	1,403,076
Total assets	5,633,483	5,549,946

Summary Statement of Movements in Equity for the year ended 31 December 2012

Equity at beginning of the year	5,342,431	5,096,807
Change in investment property value	-325,000	520,000
Net surplus/(deficit) for the period	442,466	-274,376
Total of revenues & expenses	117,466	245,624
Equity at end of period	5,459,897	5,342,431

Notes

1. The Christchurch Polytechnic Foundation is a charitable trust incorporated under the Charitable Trusts Act 1957 on the 3rd of December 1984. The financial statements of the Christchurch Polytechnic Foundation are general purpose financial statements which have been prepared according to generally accepted accounting practice. The Christchurch Polytechnic Foundation is a public benefit entity.

2. The full financial statements from which these summary accounts have been derived were authorised for issue on 22 April 2013.

3. The specific disclosures included in the summary financial statements
4. The full financial statements of Christchurch Polytechnic Foundation (the Foundation) for the year ended 31 December 2012 was audited and received an unmodified audit opinion on 22 April 2013.

5. The summary financial statements cannot be expected to provide as complete an understanding of the Foundation's performance and position as provided by the full financial statements. Copies of the full statements are available on request by emailing cpfoundation@xtra.co.nz

6. There have been no significant events since balance date.

Independent Auditor's Report

To the readers of Christchurch Polytechnic Foundation's summary of the annual report for the year ended 31 December 2012

We have audited the summary of the annual report (the summary) as set out on page 13 which was derived from the audited statements in the annual report of Christchurch Polytechnic Foundation (the Foundation) for the year ended 31 December 2012 on which we expressed an unmodified audit opinion in our report dated 22 April 2013.

The summary comprises: the summary statement of financial position as at 31 December 2012, and summaries of the statement of financial performance and statement of movements in equity for the year then ended and the notes to the summary financial statements that include accounting policies and other explanatory information.

Opinion

In our opinion, the information reported in the summary complies with FRS 43: Summary Financial Statements and represents, fairly and consistently, the information regarding the major matters dealt with in the annual report.

Basis of opinion

The audit was conducted in accordance with the Auditor General's Auditing Standards, which incorporate the International Standards on Auditing (New Zealand).

The summary and the audited statements from which they were derived, do not reflect the effects of events that occurred subsequent to our report dated 22 April 2013 on the audited statements.

The summary does not contain all the disclosures required for audited statements under generally accepted accounting practice in New Zealand. Reading the summary, therefore, is not a substitute for reading the audited statements in the annual report of the Foundation.

Responsibilities of the Trustees and the Auditor

The Trustees are responsible for preparing the summary in accordance with FRS 43: Summary Financial Statements. The Trustees are also responsible for the publication of the summary, whether in printed or electronic form. We are responsible for expressing an opinion on the summary, based on the procedures required by the Auditor General's auditing standards and the International Standard on Auditing (New Zealand) 810: Engagements to Report on Summary Financial Statements. Other than in our capacity as auditor we have no relationship with, or interest in, the Foundation.



Ian Lothian,
Audit New Zealand
On behalf of the Auditor General
Christchurch, New Zealand
22 April 2013

